

Switchmode Full Plastic Ultra-fast Power Rectifiers

-- Designed for use in switching power supplies inverters and as free wheeling diodes. These state-of-the-art devices have the following features:

- * High Surge Capacity
- * Low Power Loss, High efficiency
- * Low Thermal resistance
- * Glass Passivated chip junctions
- * 150 °C Operating Junction Temperature
- * Low Stored Charge Majority Carrier Conduction
- * Low Forward Voltage, High Current Capability
- * Reduces switching and conduction losses
- * Plastic Material used Carries Underwriters Laboratory Flammability Classification 94V-O



Plating pb free is indicated by box

**ULTRA FAST
RECTIFIERS**

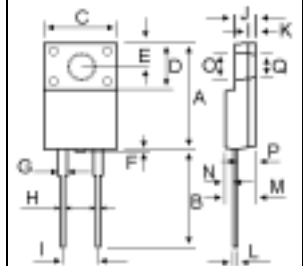
**8 AMPERES
600 VOLTS**



ITO-220A

MAXIMUM RATINGS

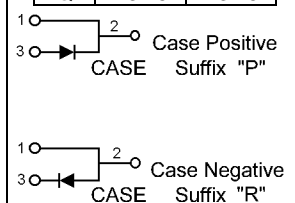
Characteristic	Symbol	URAF0860L	Unit
Peak Repetitive Reverse Voltage Working Peak Reverse Voltage DC Blocking Voltage	V_{RRM} V_{RWM} V_R	600	V
RMS Reverse Voltage	$V_{R(RMS)}$	420	V
Average Rectifier Forward Current Total Device (Rated V_R), $T_C=55$	$I_{F(AV)}$	8.0	A
Non-Repetitive Peak Surge Current (Surge applied at rate load conditions halfwave, single phase, 60Hz)	I_{FSM}	125	A
Operating and Storage Junction Temperature Range	T_J, T_{stg}	-65 to +150	



DIM	MILLIMETERS	
	MIN	MAX
A	15.05	15.15
B	13.35	13.45
C	10.00	10.10
D	6.55	6.65
E	2.65	2.75
F		1.00
G	1.15	1.25
H	0.55	0.65
I	4.80	5.20
J	3.00	3.20
K	1.10	1.20
L	0.55	0.65
M	4.40	4.60
N	1.15	1.25
P	2.65	2.75
O	3.35	3.45
Q	3.15	3.25

ELECTRIAL CHARACTERISTICS

Characteristic	Symbol	URAF0860L	Unit
Maximum Instantaneous Forward Voltage ($I_F=8.0$ Amp $T_C=25$) ($I_F=8.0$ Amp $T_C=125$)	V_F	1.10 0.95	V
Maximum Instantaneous Reverse Current (Rated DC Voltage, $T_C=25$) (Rated DC Voltage, $T_C=125$)	I_R	10 50	uA
Reverse Recovery Time ($I_F=0.5$ A, $I_R=1.0$, $I_{rr}=0.25$ A)	T_{rr}	100	ns
Typical Junction Capacitance (Reverse Voltage of 4 volts & $f=1$ MHz)	C_P	75	pF
Thermal resistance Junction to case	$R_{th(j-c)}$	3.2	°C/W



URAF0860L

FIG-1 TYPICAL FORWARD CHARACTERISTICS

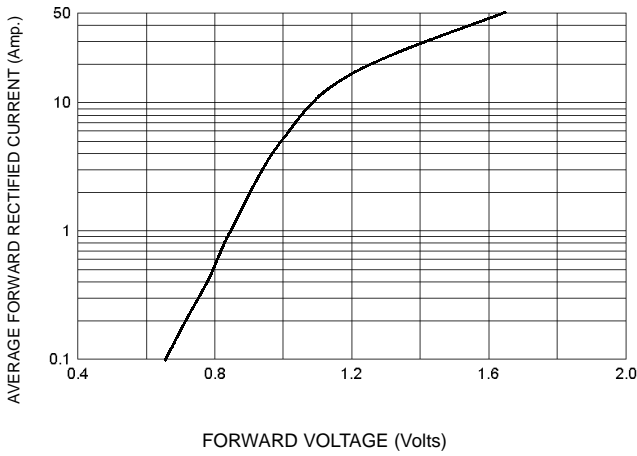


FIG-3 FORWARD CURRENT DERATING CURVE

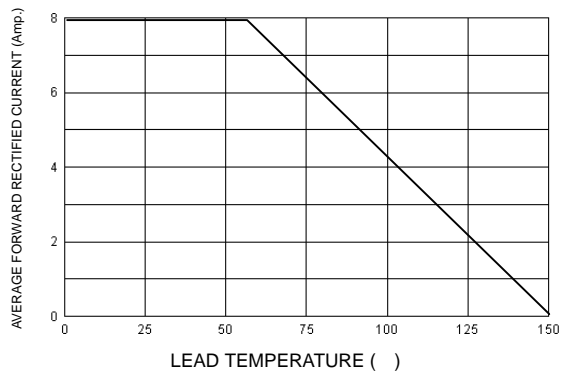


FIG-2 TYPICAL REVERSE CHARACTERISTICS

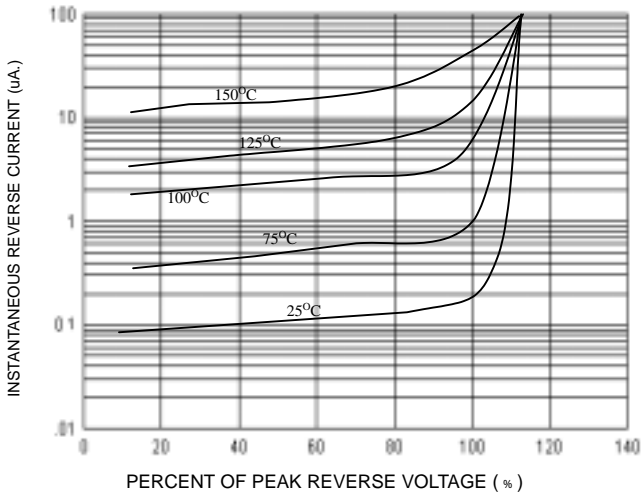


FIG-4 TYPICAL JUNCTION CAPACITANCE

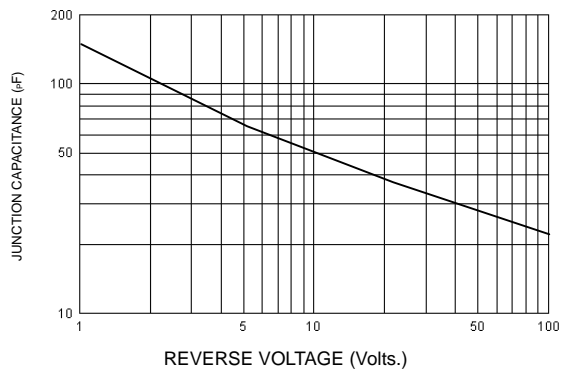
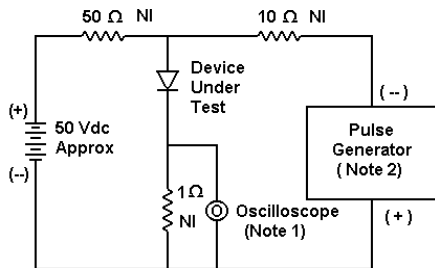
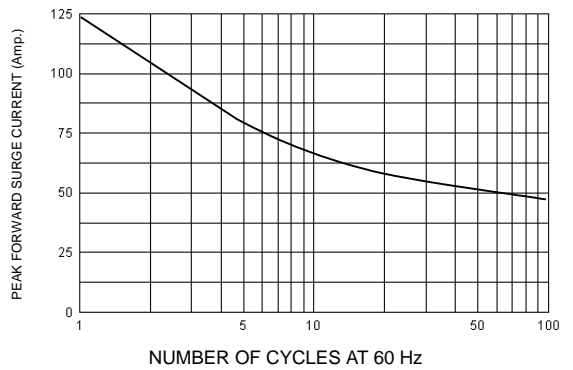
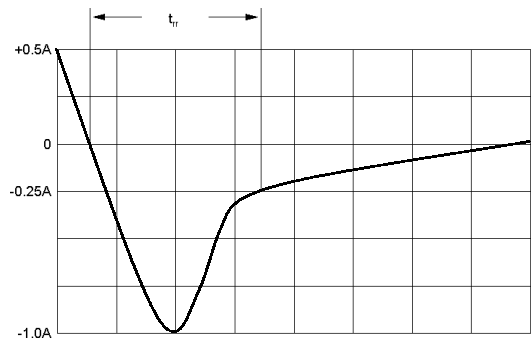


FIG-5 PEAK FORWARD SURGE CURRENT



- Notes:
 1. Rise Time = 7 ns max. Input Impedance = 1 M Ω , 22 pF
 2. Rise Time = 10 ns max. Input Impedance = 50 Ω



Set time base for 20/50 ns/cm

FIG-6 Reverse Recovery Time Characteristic and Test Circuit Diagram